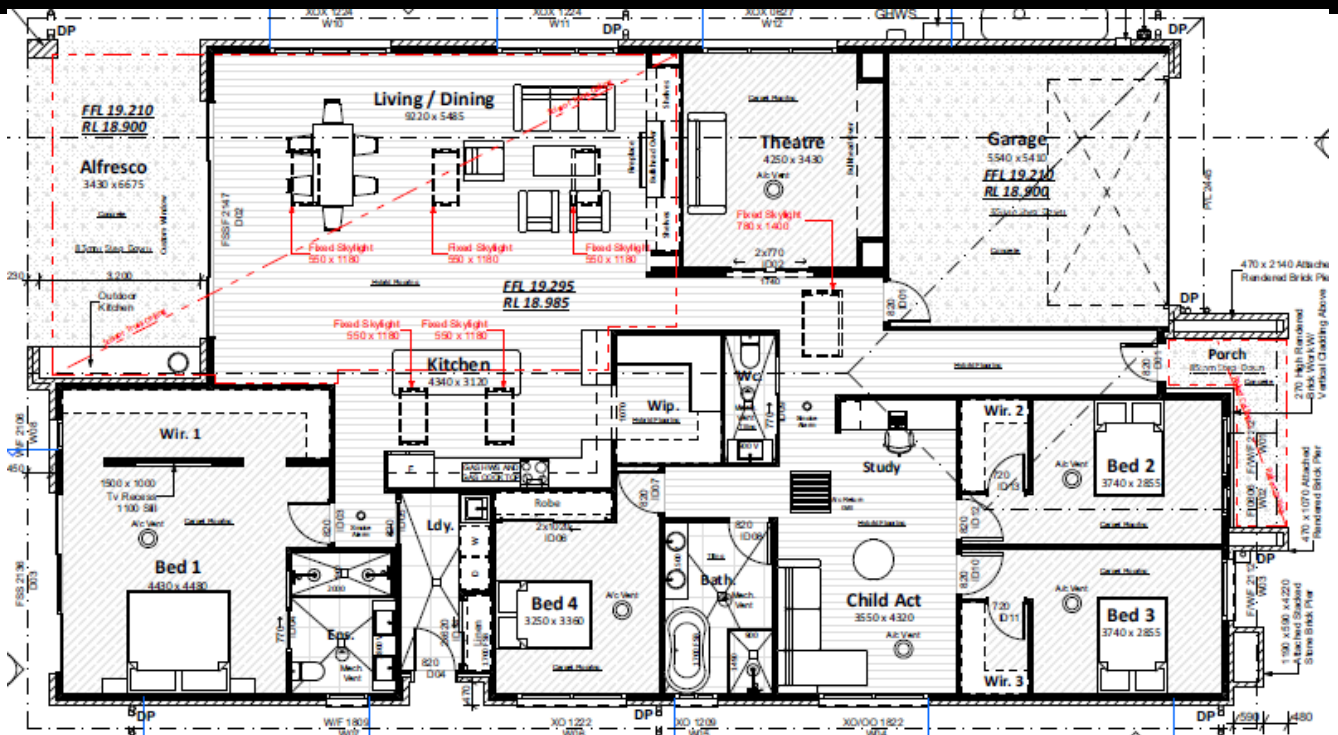




10 GURIL PDE CRANGAN BAY



ALFRESCO - 25.14 SQM
 GARAGE - 32.68SQM
 LIVING - 1246 SQM
 PORCH - 6.9 SQM

\$ POA

311 SQM

INCLUSIONS

- FIXED SITE COST
- INC. DRIVEWAY
- DUCTED AIR
- STONE TOPS
- CARPETS
- FLOATING FLOORS
- F & P APPLIANCES
- COLORBOND ROOF
- LETTER BOX
- DEEP EDGE BEAM
- LUXURY FINISHES
- PORCH & ALFRESCO TILING
- STONE FEATURE FACADE
- LANDSCAPING

4 3 2 3 2

Terms & conditions apply

- Images are for illustrative purpose only and may include optional upgrades not included in the price of the house
- Valletta homes reserves the right to change plans, prices, specifications, product, suppliers without notice
- the purchase is a split contract where the land is purchased through the developer and the building contract is entered into with Valletta homes, So stamp duty is only paid on the land
- ABN: 18617280181
- BUILDERS LIC: 36443c

